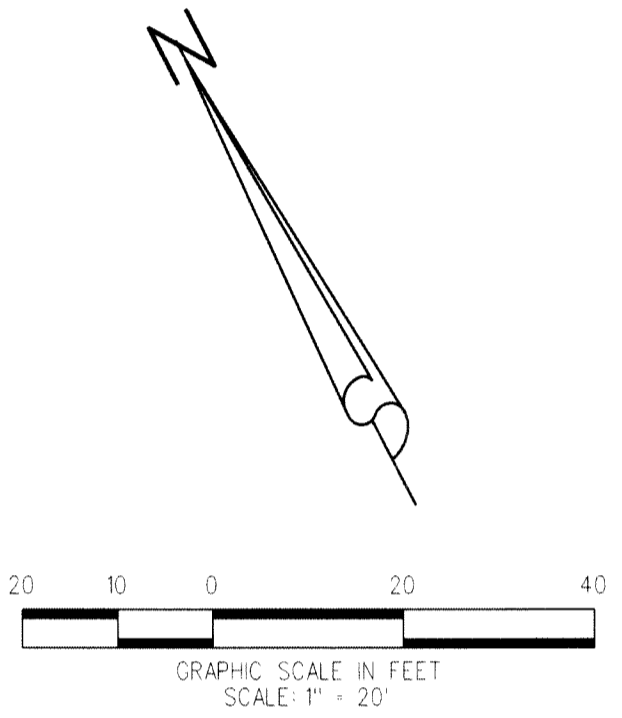
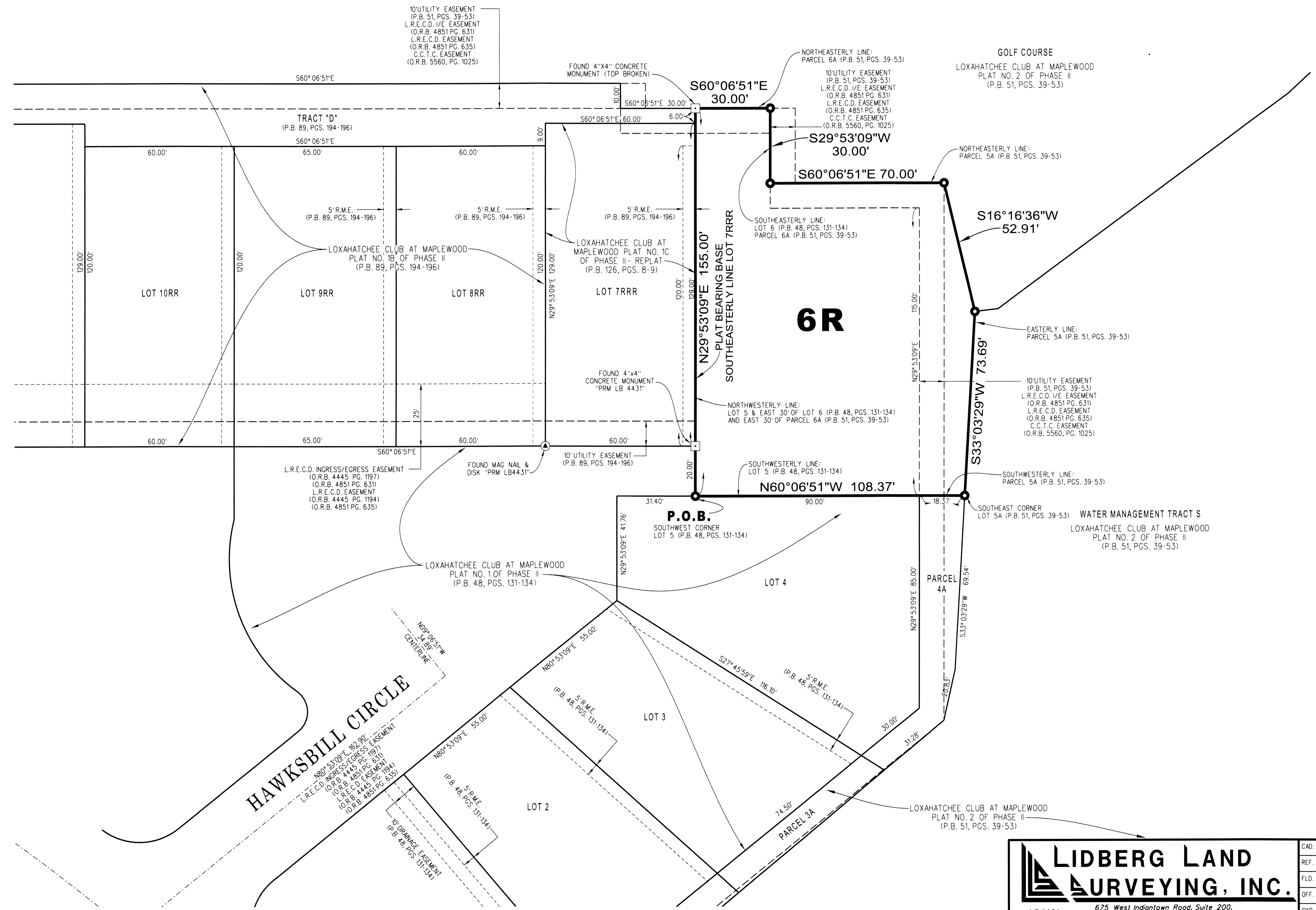


LOXAHATCHEE CLUB AT MAPLEWOOD PLAT NO. 1D OF PHASE II - REPLAT

BEING A REPLAT OF LOT 5 AND THE EAST 30 FEET OF LOT 6, AS SHOWN ON THE PLAT OF THE LOXAHATCHEE CLUB AT MAPLEWOOD, PLAT NO. 1 OF PHASE II, RECORDED IN PLAT BOOK 48, PAGES 131 THROUGH 134 AND A REPLAT OF PARCEL 5A AND THE EAST 30 FEET OF PARCEL 6A, AS SHOWN ON THE PLAT OF THE LOXAHATCHEE CLUB AT MAPLEWOOD, PLAT NO. 2 OF PHASE II, RECORDED IN PLAT BOOK 51, PAGES 39 THROUGH 53, PUBLIC RECORDS OF PALM BEACH COUNTY, FLORIDA. LYING IN SECTION 11, TOWNSHIP 41 SOUTH, RANGE 42 EAST, TOWN OF JUPITER, PALM BEACH COUNTY, FLORIDA

APRIL 2021 SHEET 2 OF 2

82



LEGEND / ABBREVIATIONS

- = DENOTES PERMANENT REFERENCE MONUMENT (P.R.M.) SET 5/8" IRON ROD & METAL CAP "PRM LB 4431"
- C.C.T.C. = CENTEL CABLE TELEVISION CO.
- L.R.E.C.D. = LOXAHATCHEE RIVER ENVIRONMENTAL CONTROL DISTRICT
- O.R.B. = OFFICIAL RECORD BOOK
- PG. = PAGE
- P.B. = PLAT BOOK
- P.R.M. = PERMANENT REFERENCE MONUMENT
- P.O.B. = POINT OF BEGINNING
- R.M.E. = RECIPROCAL MAINTENANCE EASEMENT

LIDBERG LAND SURVEYING, INC.
 LB4431 675 West Indiantown Road, Suite 200, Jupiter, Florida 33458 TEL. 561-746-8454

CAD:	K:\UST \ 114142 \ 48-131 \ 03-079 \ 03-079-306 \ 03-079-306.DGN		
REF:			
FLD:	FB.	PG.	JOB 03-079-306
OFF:	CASASUS		DATE NOVEMBER 2020
CKD:	D.C.L.	SHEET 2 OF 2	DWG. 003-079P